



**ENGINEERED PRODUCTS**

# GC SERIES CONE CRUSHERS

## GC - 400

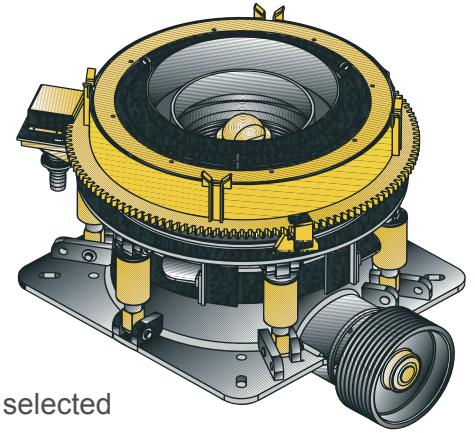
**Engineers and Manufacturers of Washing, Vibrating and Crushing Equipment**

### Unique Features

- Full hydraulics for clamp, adjust and clearing
- Several Throw and Speed combinations for maximum performances
- Fully balanced at all throws and speeds
- Rugged spiral bevel gearing
- Floating ring seal with air and grease options

### Unique Customer Benefits

- “Right” combination of critical variables such as throw, speed and liners can be selected for each application to maximize the production of the saleable products and minimize waste.
- GC Cones use universal bowl and head assemblies so the application can be changed from coarse secondary to fine tertiary by only changing the Bowl Liner, the Mantle stays the same.
- Size for size the capacity of the GC Cone is double that of a “Regular” cone.
- The crusher has full hydraulics to clamp, adjust and clear. If the crusher stalls for any reason, it can be cleared safely and automatically within a few minutes.
- The GC Cone is a balanced crusher, with any combination of throw and speed, to minimize the structural requirements of the foundations and portable plants. Its compact design makes it suitable for portable applications.
- Design platform is based on a well known cone crusher that has a successful track record in both aggregate and mining applications throughout the world. The GC Cone design will endure *normal* abuse of the day to day operation and will keep running under moderate overloads until a shut down is scheduled.
- The GC Cone design is automation friendly and can easily be integrated into any automation scheme of an existing plant.
- Designed with both operation and maintenance personnel in mind the GC Cone is easy to operate, maintain, troubleshoot and repair.
- All components and assemblies are designed for ease of manufacturing to reduce their cost and pass savings on to our customers.
- The GC Cone has two sets of mounting holes so it can quickly be installed on any foundation to replace an existing crusher.
- The GC Cone is also very safe to operate and maintain. All maintenance, assembly and disassembly are accessed from the top and side of the unit.



#### • Maximized Production

- 400-450 HP
- Packaged Lubrication System
- Ready for full Automation
- Full hydraulics for Clamp, Adjust and Clearing
- Universal Head and Bowl for all applications
- Rugged Spiral Bevel gearing

#### • Low Maintenance / Operation Cost

- Advanced materials and processes improve the service life of critical crusher components
- One Year Warranty
- Quick Deliveries
- Off-the-shelf parts

**TRIO Equipment Europe Ltd.,** Clonminam Industrial Park, Portlaoise, Co. Laois, Ireland.

**Phone:** +353 (0) 57 8661333 **Fax:** +353 (0) 57 8672550 **sales@trioeurope.com** **www.trioeurope.com**



**ENGINEERED PRODUCTS**

# GC SERIES CONE CRUSHERS

## GC - 400

**Engineers and Manufacturers of Washing, Vibrating and Crushing Equipment**

### Liner Selection

	Secondary		Tertiary	
	Min. Setting Inch ( mm)	Feed Open.(OS) Inch ( mm)	Min. Setting Inch ( mm)	Feed Open.(OS) Inch ( mm)
<b>Coarse</b>	1" (25)	10.6" (270)	3/8" (12)	3 1/2" (90)
<b>Medium</b>	.9" (22)	8" (200)	3/8" (10)	2.2" (55)
<b>Fine</b>	.7" (17)	5.1" (130)	1/4" (6)	1" (25)

Note : Maximum feed size should be equal to feed opening at the min. setting

### Open Circuit Maximum Capacities

TPH	Closed Side Setting – Inches(mm)									
	3/8" 10mm	1/2" 13mm	5/8" 16mm	3/4" 19mm	7/8" 22mm	1" 25mm	1 1/4 " 32mm	1 1/2 " 38mm	1 3/4 " 45mm	2 " 50mm
<b>Short</b>	185-235	255-305	310-355	355-415	385-445	410-475	445-525	500-590	570-685	645-775
<b>Metric</b>	165-210	230-275	280-320	320-375	345-400	370-430	400-475	450-530	515-620	580-700

### Product Gradations - Percent Passing

Product Size	Closed Side Setting – Inches(mm)						
	(Note: Figures for 1/4" to 3/4" Closed Side Settings are for closed circuit application and the rest are for the open circuit application)						
	STANDARD						
Inch mm	1/4" 6	3/8" 10	1/2" 13	3/4" 19	1" 25	1 1/2" 38	2" 51
<b>4" (100)</b>							100
<b>3" (75)</b>						100	80-90
<b>2" (50)</b>					100	80-90	70-77
<b>1 1/2" (38)</b>				100	80-90	70-77	55-65
<b>1" (25)</b>			100	80-90	70-80	54-60	37-45
<b>3/4" (19)</b>		100	80-90	72-80	58-64	40-45	30-36
<b>1/2" (13)</b>	100	80-90	74-80	44-60	40-45	30-34	20-25
<b>3/8" (10)</b>	80-90	76-80	58-64	40-45	32-36	22-25	16-20
<b>1/4" (6)</b>	76-80	44-60	40-45	28-32	22-25	15-18	12-15
<b>4# (5)</b>	58-64	40-45	32-35	22-25	18-20	12-14	9-11
<b>6# (3)</b>	43-48	30-33	22-25	18-20	13-15	9-11	7-9
<b>8# (2)</b>	32-35	22-25	18-20	12-14	10-12	6-8	5-7

Note 1: The values are for the average feed material with WI = 12 to 14

Note 2: The values in the above tables will vary with the method of feeding, feed distribution, feed segregation, crushing cavity, bulk density, fines in the feed, moisture content, fracture characteristics, speed, etc. Consult Trio Engineered Products, Inc. for more accurate estimate.

**TRIO Equipment Europe Ltd.,** Clonminam Industrial Park, Portlaoise, Co. Laois, Ireland.

Phone: +353 (0) 57 8661333 Fax: +353 (0) 57 8672550 sales@trioeurope.com www.trioeurope.com

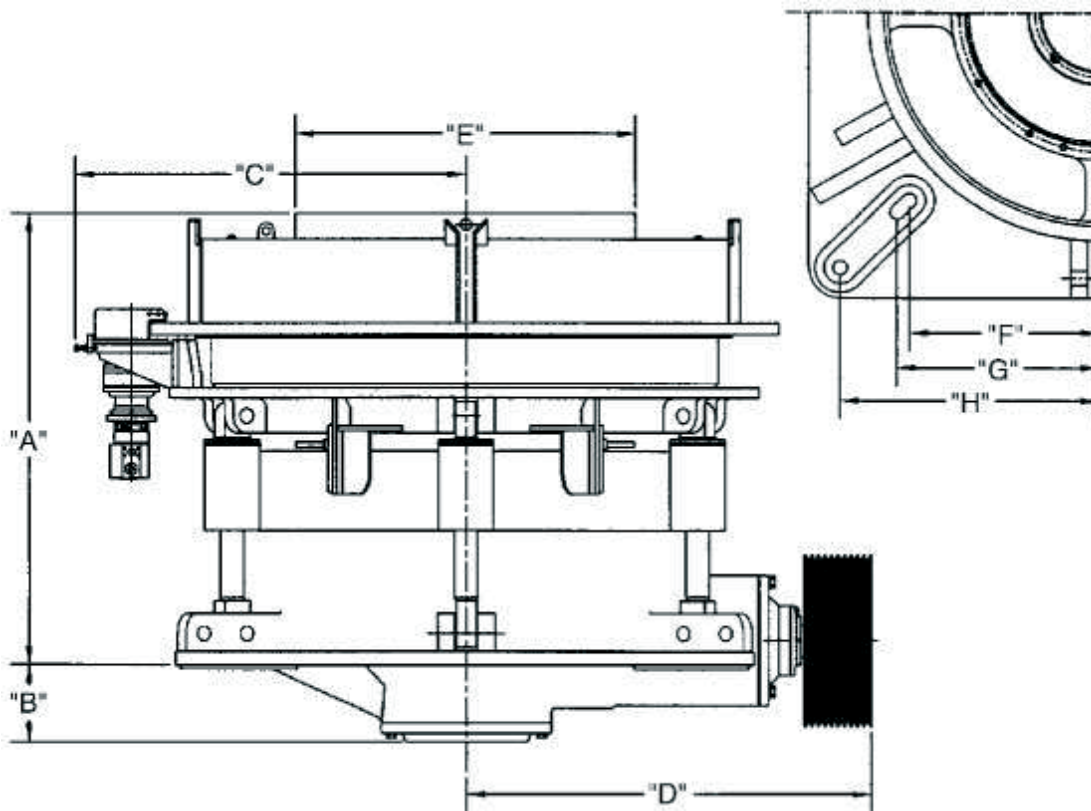


**ENGINEERED PRODUCTS**

# GC SERIES CONE CRUSHERS

## GC - 400

Engineers and Manufacturers of Washing, Vibrating and Crushing Equipment



Clearance Dimension	INCHES	METRIC
A. Maximum Height from Mounting Flange	78.7	1999
B. Mounting Flange to Bottom of Main Frame Cap	13.5	343
C. Maximum Crusher Width from Center Line	67.0	1701
D. End of Countershaft to Centerline of Crusher	70.2	1782
E. Feed Cone Diameter	58.6	1489
F. Mounting Hole Spacer - Inner	32.7	830
G. Mounting Hole Spacer - Outer	34.8	883
H. Maximum Base Flange	44.5	1130

**Total Crusher Weight - 69,000 lbs. (31,230 kg)**  
**Countershaft Speed - 600 - 900 rpm**

**TRIO Equipment Europe Ltd.,** Clonminam Industrial Park, Portlaoise, Co. Laois, Ireland.

**Phone: +353 (0) 57 8661333 Fax: +353 (0) 57 8672550** [sales@trioeurope.com](mailto:sales@trioeurope.com) [www.trioeurope.com](http://www.trioeurope.com)



**ENGINEERED PRODUCTS**

# GC SERIES CONE CRUSHERS

## GC - 400

**Engineers and Manufacturers of Washing, Vibrating and Crushing Equipment**

### Global Cone Vs. Other Cone Crushers

No.	Feature/Benefit	Global Cone	HP	Sandvik	Kodiak & MVP
1	Variable throw for Max. Saleable product tonnage	Yes	No	Yes	No
2	Variable speed for Max. Saleable product tonnage	Yes	Yes	Yes	No
3	Large throw for Max. Throughput tonnage	Yes	Yes	50%	75%
4	High Crushing Force capability	Yes	No	No	No
5	Free flow feed into the crushing cavity	Yes	Yes	No	Yes
6	Universal Head & Mantle for all applications	Yes	No	No	No
7	Tramp Rel. System without accumulators	Yes	No	No	Yes/No
8	Balanced crusher at all throw speeds	Yes	No	No	No
9	Compact design for portable applications	Yes	Yes	No	Yes
10	Easy to automate	Yes	Yes	Yes	?
11	Bronze main bearings w/ largest bearing surfaces	Yes	No	No	No
12	Main Shaft fixed in:	Head	Frame	Head	Frame
13	Mult. mounting bolt patterns to replace other cones	Yes	No	No	No
14	Sealed Ct. Shaft box assembly for long life	Yes	No	No	No
15	Spiral bevel hardened gear & pinion for long life	Yes	No	No	No
16	Head spin, no load (RPM)	40	200+	?	Req. Brake
17	Grease or air seal option	Yes	No	No	No

**TRIO Equipment Europe Ltd.,** Clonminam Industrial Park, Portlaoise, Co. Laois, Ireland.

**Phone:** +353 (0) 57 8661333 **Fax:** +353 (0) 57 8672550 [sales@trioeurope.com](mailto:sales@trioeurope.com) [www.trioeurope.com](http://www.trioeurope.com)